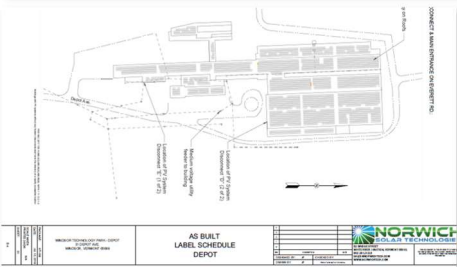
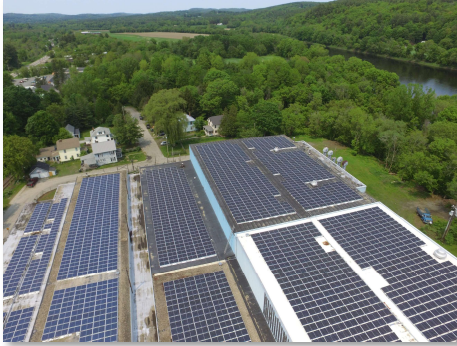


WINDSOR TECHNOLOGY PARK

CASE STUDY



PROJECT SUMMARY

Windsor Technology Park (WTP) facilities includes office/industrial/manufacturing/distribution and storage space. WTP encompasses 30 acres with approximately 1,000 feet of frontage on the Connecticut River and onsite rail service.

The property is the former site of Cone Blanchard, a prominent 20th century machine tool manufacturer that built large grinding machines and multi-spindle lathes. The property and buildings were purchased by the current owners in 2006 with the vision of developing a technology incubator, with office space, manufacturing and warehouse space all within the facility.

It consists of two buildings just off the Main Street in the middle of downtown Windsor; which together offer approximately 250,000 square feet of manufacturing, warehouse and office space.

Windsor Technology Park added a **1.53-Megawatt solar photovoltaic (PV) system** from Norwich Solar Technologies to the roof of their commercial and industrial facility.

The solar project supplies lower cost renewable energy to the complex as well as the **Living Well Group** retirement communities and **Thetford Academy**.



SYSTEM CAPACITY

1.53 Megawatts-DC/1 Megawatt-AC

TYPE OF SYSTEM

- Ballasted Roof-Mounted

TECH DATA

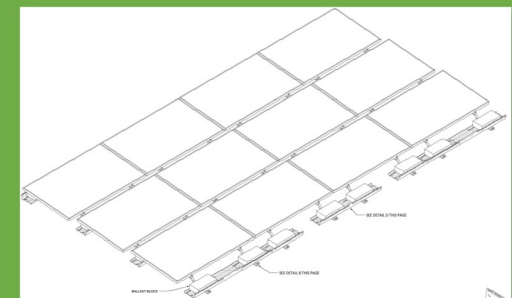
- Solar Modules: 3,895 REC & Qcell
- Inverters: 10 SolarEdge SE100kUS

COMMISSIONING DATE

- December 2018

LOCATION

- Windsor, Vermont



15 Railroad Row, White River Junction, VT 05001
(802) 281-3213 norwichsolar.com info@norwichsolar.com



ENVIRONMENTAL & COST SAVINGS AT-A-GLANCE



Annual Solar
Electricity Production
1.5 MILLION KWH



Lifetime Energy
Savings **\$6,000,000**



Estimated CO₂ Offset
1,100 TONS ANNUALLY



Carbon sequestered by
1,248 ACRES of U.S.
forests in one year

*Offset estimates based on 50K lbs. of
carbon offset or 579 trees planted per kW
over the Solar PV system's 25-year life.*

LEARN MORE

NorwichSolar.com
WindsorTechPark.com

WINDSOR TECHNOLOGY PARK

CASE STUDY

FINANCIAL & ENVIRONMENTAL SAVINGS

Besides cutting \$6 million in energy costs, WTP's solar array will offset approximately 58 million lbs. of CO₂, the equivalent of 65 million miles not driven or 185 homes' electricity use per year. The project also represents \$4.1 million directly invested in the Vermont labor economy – representing 14 fulltime Clean Tech jobs for 1 year.

LOCAL BENEFITS

Windsor Technology Park is a unique multifunctional complex and an ideal location for solar arrays. The rooftop units will provide solar energy to the facility so all businesses at the park receiving power will benefit.

WTP management viewed this project not only as an upgrade to the facility, but an attractive feature for future tenants, and a part of Vermont's alternative energy production initiative that will directly benefit tenants, investors, and the Park's owners for decades to come.

ABOUT NORWICH SOLAR TECHNOLOGIES

We specialize in comprehensive clean energy services including development, design, engineering, procurement, and construction, and financial structuring including net metering agreements.

Our partners include commercial & industrial clients, schools, municipalities, farms, community solar groups, health care facilities, and small businesses.



15 Railroad Row, White River Junction, VT 05001
(802) 281-3213 norwichsolar.com info@norwichsolar.com